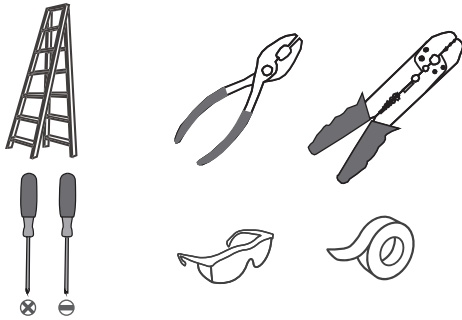
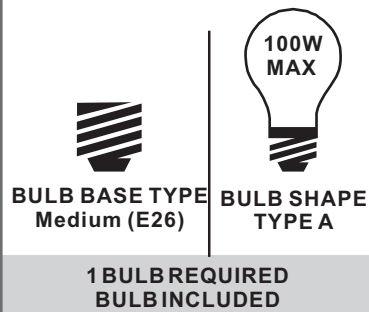


**Tools Required**



**Light Source**



**Warnings and Cautions**

Turn off the electricity at the circuit breaker before installation. Consult a licensed electrician if in doubt about installation.

Turn off power to the fixture and allow the bulbs to cool before replacing.

**Package Contents**

**Preparation:** Identify and inspect all parts before beginning the installation.

Missing or damaged parts? Contact your original place of purchase.

**PARTS BAG**



**A** Inner Backplate  
x 1



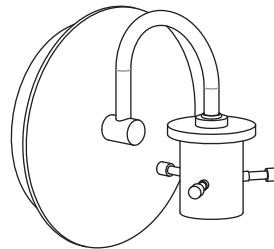
**B** Mounting Screw  
x 2



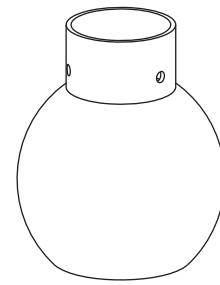
**C** Outlet Box Screw  
x 2



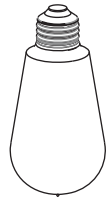
**D** Wire Connector  
x 3



**E** Fixture Body  
x 1



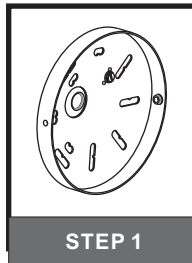
**F** Glass Shade  
x 1



**G** Vintage Bulb  
x 1

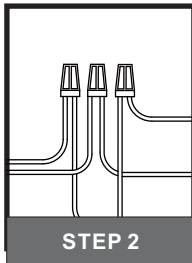
**Table of Contents**

**Inner Backplate**



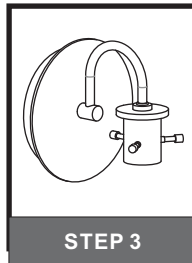
**STEP 1**

**Wiring**



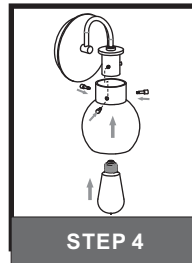
**STEP 2**

**Fixture Body**



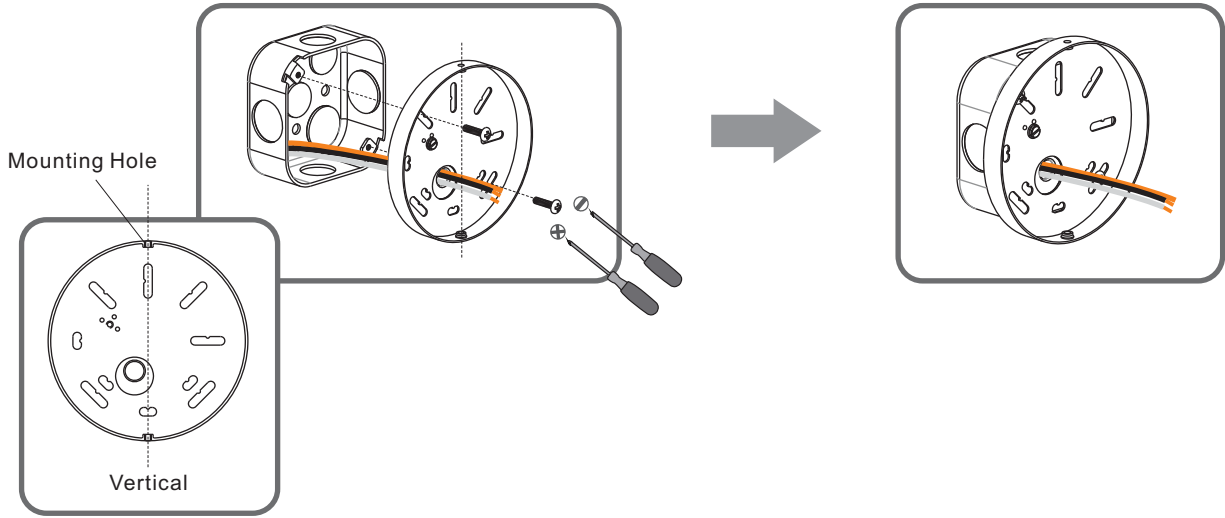
**STEP 3**

**Glass and Bulb**

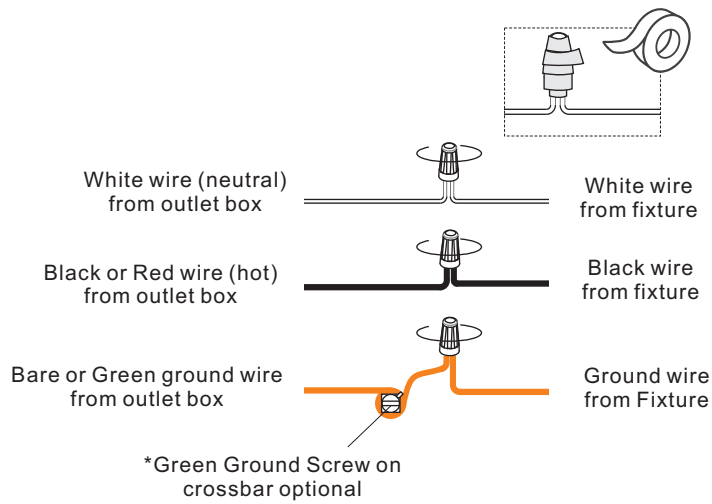


**STEP 4**

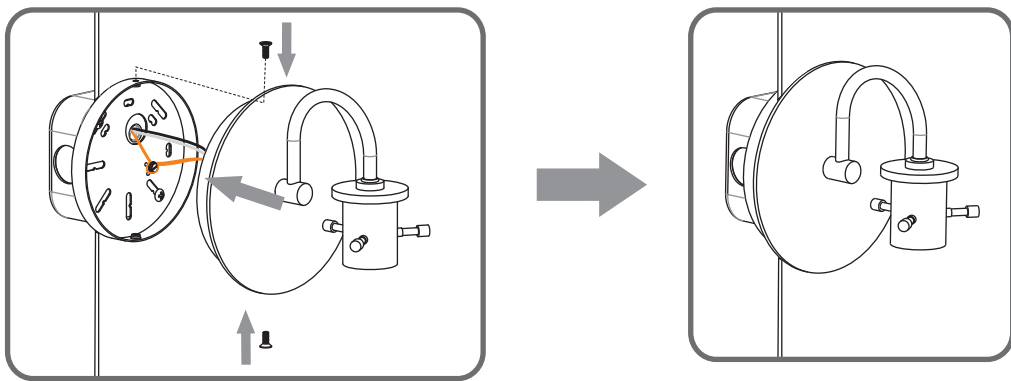
### STEP 1



### STEP 2



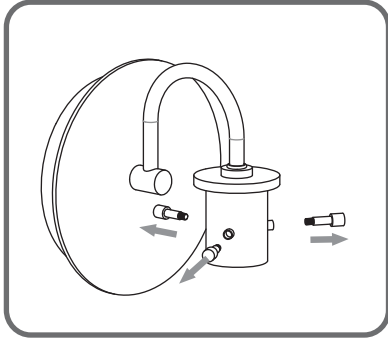
### STEP 3



**STEP 4**

**1**

**Remove Lock Screws**



**2**

**Install glass and bulb**

